

STATE UNIVERSITY OF NEW YORK
UNIVERSITY HOSPITAL OF BROOKLYN

2009 CAMPUS STATEMENT

University Hospital of Brooklyn (UHB) is the 376-bed hub teaching hospital of SUNY Downstate Medical Center and the only academic medical center hospital serving the approximately 2.7 million residents of Brooklyn and Staten Island. UHB is charged to provide a high level of care for patients who often present with advanced stages of disease, which complicate diagnosis, treatment, and the delivery of care. The hospital is situated in an inner-city environment with all of the associated economic and social issues found in most large cities, and with the additional complexities of an unusually diverse patient population.

UHB's population base has ethnic origins in the Caribbean, the Middle East, Africa, Southern and Eastern Asia, Eastern and Western Europe, and Latin America. Over 93 separate languages and dialects are spoken in the communities served. To deliver cost-effective, high-quality care to this diverse constituency, which includes persons of all faiths, requires that UHB attract a complement of highly-qualified and culturally-competent medical professionals, and demands that we be able to provide patients with access to the most modern medical equipment and facilities. In view of our essential teaching mission, UHB also needs to be configured, staffed, and organized to educate the next generation of health care providers. In addition to the inpatient and ambulatory care facilities located at the main hospital, UHB operates several community-based clinical sites, which serve as additional clinical training sites in support of the Hospital's academic mission. UHB has increased its outreach presence this year with the opening of an Urgicenter and additional ambulatory services in Bay Ridge.

Recent capital authorizations have helped critical infrastructure renewal to move ahead and have enabled a few key program enhancements. We have completed replacement of all Hospital windows, sealed exterior panels, installed semi-instantaneous hot water heaters, begun the upgrade of our hospital-wide fire alarm system, and are near completing design on upgrades to the emergency generators, electrical, building management, and HVAC systems.

UHB also continues to develop programmatic projects to respond to the sustained increase in its inpatient census, in addition to our efforts to reduce length of stay and re-open inpatient rooms previously used for clinical support and training purposes. This large census growth--and UHB's obligation to provide the most modern diagnostic and treatment methodologies to our patients--- continue to strain the capacity of an aging physical plant. The Capital Program has enabled UHB to move ahead on the following programmatic projects: completing the design of Alterations to the Transplant Unit, with construction estimated at \$8 million, to create a totally new nursing unit meeting today's patient care, compliance, and engineering standards; a completed design for full replacement of our food service kitchen; completion of a code-complying renovation of our inpatient psychiatric unit; installing a new 64-slice CT Scanner in the Radiation Oncology service; and initiation of construction in our MRI-CT Suite to improve the patient care environment and achieve MRI safety and technology upgrades.

After completing and adopting a comprehensive master plan for Ambulatory Service Expansion, University Hospital has begun the design of a new Ambulatory Care Pavilion and Related Projects. When completed, the ASE Project will add about 175,000 square feet, and will renovate upwards of 300,000 square feet of existing space. The estimated cost of the full plan is about \$300 million. DMC / UHB has planned the phasing of the project to align with the \$234 million available in the current Capital Program. The ASE Project will enable UHB to deploy contemporary diagnostic and treatment technologies, anticipate and respond to changing clinical modalities, continue to educate tomorrow's health care providers, and maintain the highest quality of care for our growing patient population. It is expected to proceed concurrently with numerous critical infrastructure maintenance and improvement programs.

Finally, in its continuing effort to address the issues of an aging physical plant and lack of space to provide for our clinical and educational mission, UHB has submitted major grant applications for affiliations or consolidations with Long Island College Hospital and neighboring Kingsbrook Jewish Medical Center. Should any of these prove successful, additional capital initiatives are likely.

**State University of New York
University Hospital of Brooklyn**

Facility Profile as of Fall 2008

Facility Profile	Hospital	Residential	Total
Total State Owned Acreage			Included in Main Campus
Total State Owned Buildings	2	0	2
Total State Owned Gross Square Feet (GSF)	842,600	0	842,600
Total State Owned Net Assignable Square Feet (NASF)	493,351	0	493,351

Age of Facilities	< 10 Years	10 – 40 Years	> 40 Years
Gross Square Feet	0	0	842,600
Percentage of Total GSF	0.0%	0.0%	100.0%

Net Assignable Space Distribution by Major Functional Area						
Clinic	Research	Student Activities	Administration	Central Services	Residential	Total
85%	4%	2%	5%	4%	0%	100%

**State University of New York
University Hospital of Brooklyn**

Profile of Clinical Services/Utilization

For the Year Ended December 31st					
	2004	2005	2006	2007	2008
Inpatient (excludes newborns):					
Total licensed beds	376	376	376	376	376
Total discharges	14,366	16,011	17,034	16,777	17,743
Total patient days	85,166	96,642	105,541	106,100	110,673
Total occupancy	62%	70%	77%	77%	80%
Average length of stay (days)	5.9	6.0	6.2	6.3	6.2
Outpatient:					
Emergency room visits (ER)	54,190	58,271	63,018	63,404	69,567
Number of admissions from ER	10,406	9,992	11,502	11,937	12,253
Percentage of admissions from ER visits	19%	17%	18%	19%	18%
Outpatient clinic visits	97,652	99,077	112,297	118,128	129,381
Other outpatient visits	218,164	211,845	206,261	197,798	215,314
Ambulatory surgery procedures	8,511	9,597	9,270	8,482	8,394
Case mix index - Medicare	1.45	1.52	1.47	1.52	1.54
Case mix index - Non-medicare	1.51	1.41	1.50	1.57	1.62
Payer mix percentages:					
Medicare	22%	22%	21%	21%	22%
Medicaid	23%	18%	17%	17%	16%
Blue Cross/Blue Shield	8%	8%	8%	8%	8%
Commercial	2%	3%	3%	2%	2%
Managed care	40%	44%	46%	46%	47%
Self pay	5%	4%	5%	6%	5%
Workers compensation	0%	1%	0%	0%	0%
Other	0%	0%	0%	0%	0%
Total FTE employees	2,647	2,827	2,975	3,052	3,178



Campus Owned Facilities

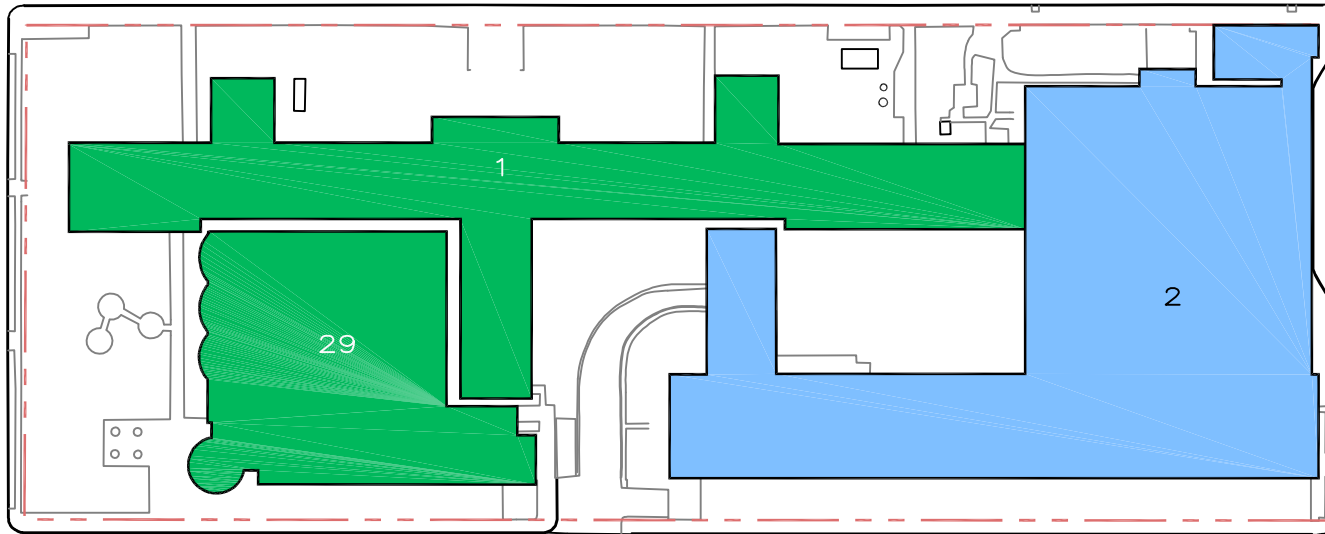
BUILDING INDEX

1. BASIC SCIENCE CENTER
2. UNIVERSITY TEACHING HOSPITAL
3. RESIDENCE HALL STAGE VII
4. RESIDENCE HALL STAGE VIII
5. PARKING GARAGE
6. STUDENT CENTER
7. NURSE RESIDENCE
15. ADMINISTRATION FACILITY
26. SUCF TRAILER
27. TRAILER - ANNEX 2
29. HEALTH SCIENCE EDUCATION BLDG.
33. TRAILER - LABOR RELATIONS

CLARKSON

CLARKSON

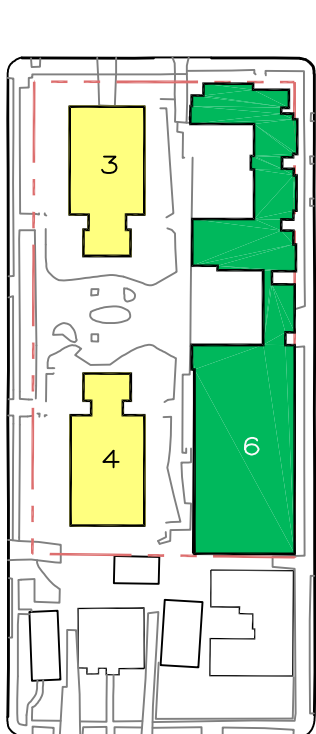
NEW YORK



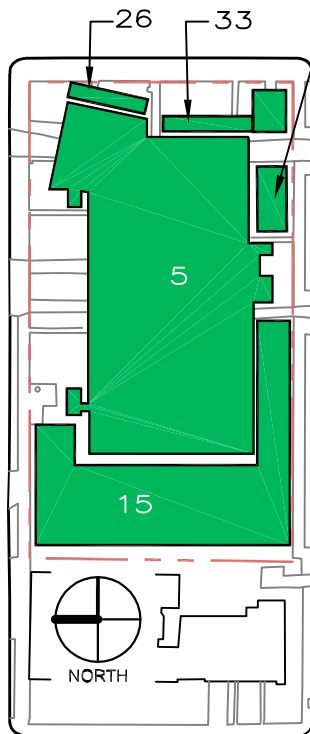
EAST 37TH

LENOX ROAD

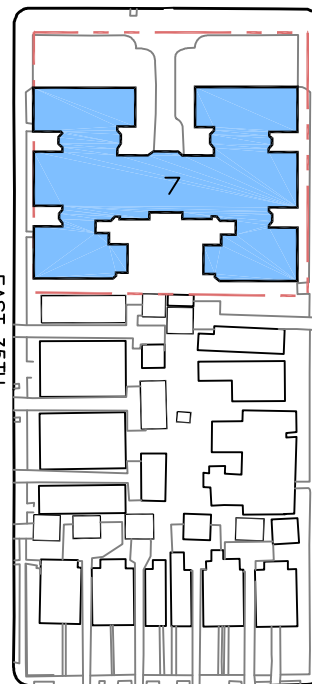
NEW YORK



EAST 34TH



EAST 35TH



BROOKLYN



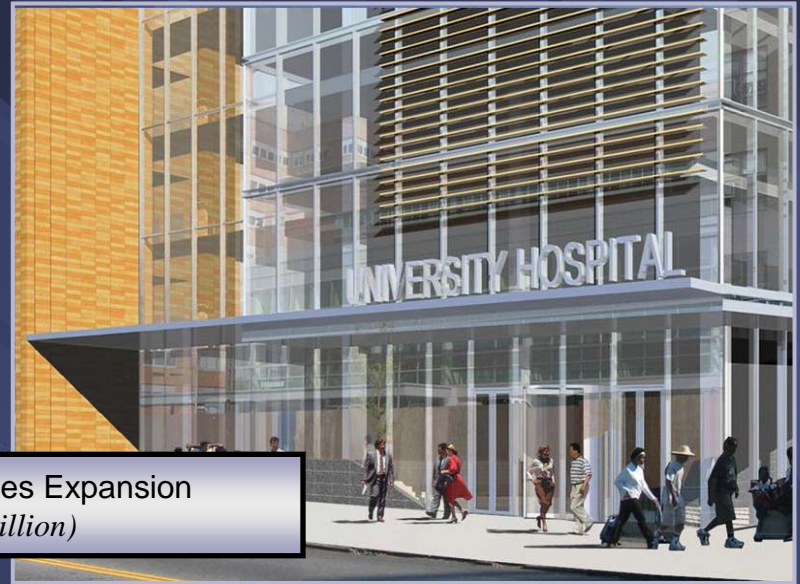
EAST 37TH

- ACADEMIC BUILDINGS
- RESIDENTIAL BUILDINGS
- HOSPITAL BUILDINGS

FALL 2008



Ambulatory Services Expansion
(\$ 188.4 Million)



Intervention Imaging Modernization
(\$ 5.4 Million)



Replace Fire Alarm System
(\$ 10.5 Million)

University Hospital of Brooklyn

**State University of New York
2009/2010 Capital Program Plan
Major Ongoing Projects (Over \$1M Construction Cost)
As of July 31, 2009
(In Thousands)**

State University of New York Health Science Center at Brooklyn - Hospital

PROJECTS UNDER DESIGN

Capital Plan Projects	Total Estimated Project Cost	YTD Expend. thru 07-31-09	LTD Expend. thru 07-31-09	Encumbered Amount 07-31-09	Anticipated Start of Construction				
					09/10	10/11	11/12	12/13	13/14
Electrical Upgrade - University Hospital	\$6,567	\$118	\$502	\$8	X				
Install Energy Management System University Hospital	\$2,527	\$0	\$147	\$47	X				
Rehabilitation of Hospital Kitchen	\$6,540	\$0	\$295	\$144	X				
Plumbing & Medical Gas Upgrade UH	\$3,662	\$0	\$172	\$68	X				
HVAC Upgrade, University Hospital	\$9,608	\$0	\$674	\$261	X				
Asbestos Abatement - UH	\$1,943	\$0	\$20	\$46	X				
Provisions of HVAC System for Transplant Unit at N.S. #82	\$5,319	\$297	\$481	\$173	X				
Alt Central Sterile Services 04-108 Storage Areas	\$1,028	\$0	\$0	\$20	X				

PROJECTS UNDER CONSTRUCTION

Capital Plan Projects	Total Estimated Project Cost	YTD Expend. thru 07-31-09	LTD Expend. thru 07-31-09	Encumbered Amount 07-31-09	Anticipated Completion Date				
					09/10	10/11	11/12	12/13	13/14
Replace Fire Alarm System, Bldgs 01-BSB, Bldg 02-University Hosp. & 29-HS Educ.	\$10,456	\$130	\$563	\$9,077				X	
Life Safety Upgrade 440 Lenox Road	\$968	\$663	\$703	\$177	X				
Life Safety Upgrade University Hospital	\$1,049	\$129	\$227	\$743	X				
Replace Windows University Hospital	\$3,395	\$22	\$2,603	\$366	X				
Intervention Imaging Modernization Program	\$5,403	\$193	\$688	\$2,590	X				

**State University of New York
 2009/2010 Capital Program Plan
 Future Planned Projects - Over \$1M Construction
 As of July 31, 2009
 (In Thousands)**

State University of New York Health Science Center at Brooklyn - Hospital

Capital Plan Projects	Total Estimated Project Cost	Funds Available	Funds Needed to Complete	SFY 2009/10 Phase \$	SFY 2010/11 Phase \$	SFY 2011/12 Phase \$	SFY 2012/13 Phase \$	SFY 2013/14 Phase \$
Ambulatory Services Expansion Phase 1	\$188,400	\$185,800	\$2,600	D \$15,700				C \$172,700
PICU Alterations	\$2,330	\$2,330		D \$212	C \$2,118			
Minor Rehab & Repair UHB	\$5,000	\$5,000		C \$5,000				

PROJECT PHASES: A = Acquisition, D = Design, C = Construction, E = Equipment

**State University of New York
Summary of Changes
2009/2010 Capital Program Plan
Project Cross-Reference: Current Year Status vs. Last Year
(In Thousands)**

State University of New York Health Science Center at Brooklyn - Hospital

Capital Plan Project	2008 Estimated Project Cost	2009 Estimated Project Cost	Incr./Decr. In Estimate Cost
Projects Under Design			
Rehabilitation of Hospital Kitchen	\$5,370	\$6,540	\$1,170
Projects Under Construction			
Replace Fire Alarm System, Bldgs 01-BSB, Bldg 02-University Hosp. & 29-HS I	\$5,391	\$10,456	\$5,065
Life Safety Upgrade University Hospital	\$2,618	\$1,049	-\$1,569
Intervention Imaging Modernization Program	\$7,576	\$5,403	-\$2,173
Future Projects			
Ambulatory Services Expansion Phase 1		\$188,400	\$188,400
PICU Alterations		\$2,330	\$2,330
Minor Rehab & Repair UHB		\$5,000	\$5,000
Cancelled Projects			
Construct CCS Building Imaging Center and BSB I.S. Expansion	\$26,500	\$131	-\$26,369
Refurbish OPD Suite and Medical Mall Concept	\$6,000	\$50	-\$5,950
Additional Hospital Projects for Expansion of Hospital Programs	\$1,247	\$42	-\$1,205
Pre-Admission Testing Center	\$3,600	\$0	-\$3,600

