



STONY BROOK SEAWOLVES



MISHA HORSEY

JODIE PLIKUS



KIRSTEN JETER

2010-11 WOMEN'S BASKETBALL



Table of Contents

2010-11 Schedule, Quick Facts.....2
2010-11 Season Outlook
 Roster3
 Roster Information4
 2009-10 Stats5
 TV/Radio chart.....6
Meet The Seawolves
 Head Coach Michele Cherry7
 2010-11 Outlook 8-9
 Misha Horsey.....10
 Kirsten Jeter11
 Jodie Plikus12
 Destiny Jacobs13
 Tamiel Murray14
 Taylor Burner15
 Amanda Corona16
 Gerda Gatling17
 Dani Klupenger.....18
 Sam Landers19
 Talisha Bridges20
 Juanita Cochran21
 Whitney Davis.....22
 Morghan Farnsworth23

**2010-11 Stony Brook
 Women's Basketball Schedule**

Nov. 12	vs. Troy!	12:30 p.m.
Nov. 13	vs. Fordham!	8:30 p.m.
NOV. 18	HOFSTRA	7:00 P.M.
NOV. 24	NICHOLLS STATE	4:00 P.M.
NOV. 30	MONMOUTH	7:00 P.M.
DEC. 2	FDU	7:00 P.M.
DEC. 5	IONA	2:00 P.M.
Dec. 9	at George Mason	7:00 p.m.
Dec. 11	at George Washington	2:00 p.m.
Dec. 19	at LIU	1:00 p.m.
Dec. 21	at Old Dominion	7:00 p.m.
Dec. 31	at St. Francis (N.Y.)	2:00 p.m.
JAN. 3	UMBC*	7:00 P.M.
Jan. 6	at Binghamton*	7:00 p.m.
Jan. 12	at Vermont*	7:00 p.m.
Jan. 15	at New Hampshire*	1:00 p.m.
JAN. 18	ALBANY*	7:00 P.M.
JAN. 20	BOSTON UNIVERSIT*	7:00 P.M.
JAN. 23	at Maine*	1:00 p.m.
Jan. 26	at Hartford*	7:00 p.m.
Jan. 29	at UMBC*	2:00 p.m.
FEB. 5	VERMONT*	2:00 P.M.
FEB. 9	NEW HAMPSHIRE*	7:00 P.M.
FEB. 12	MAINE*	2:00 P.M.
Feb. 17	at Albany*	7:00 p.m.
Feb. 20	at Boston University	2:00 p.m.
FEB. 23	HARTFORD*	7:00 P.M.
FEB. 26	BINGHAMTON*	2:00 P.M.

Home games in **BOLD CAPS**
 *America East game
! Phoenix Classic, Elon, N.C.
 All times Eastern and subject to change

Stony Brook Information

Location.....	Stony Brook, N.Y.
Founded.....	1957
Enrollment.....	23,997
Nickname.....	Seawolves
Colors.....	Red, Blue & White
President.....	Dr. Samuel L. Stanley, Jr.
Director of Athletics.....	Jim Fiore
Sr. Assoc. Dir. of Athletics/SWA.....	Donna Woodruff
Athletics Phone.....	631-632-7205
Ticket Office.....	631-632-WOLF

Women's Basketball Quick Facts

Head Coach.....	Michele Cherry
Alma Mater.....	Arizona State '92
Record at SBU (Yrs.).....	24-66 (3)
Career Record (Yrs.).....	Same
Assistant Coaches.....	Evelyn Thompson, Emily Hardy, Kristy Nix
Women's Basketball Office.....	631-632-4583
Conference.....	America East
Home Arena.....	Pritchard Gymnasium (1,800)
Starters Returning/Lost.....	4/1
Letterwinners Returning/Lost.....	10/3
Newcomers:.....	4
2009-10 Record.....	10-20
America East Record/Finish.....	7-9/4th
Postseason.....	America East Semifinals

America East Conference

Address.....	215 First St Suite 140 Cambridge MA, 02142
Commissioner.....	Patrick Nero
Director of Communications.....	Sean Tainsh
Assistant Director of Communications.....	Leslie Hanna
Phone.....	617-695-6369
Fax.....	617-695-6385
Website.....	AmericaEast.com

Stony Brook Athletic Communications

Address.....	Indoor Sports Complex Stony Brook, N.Y. 11794-3500
Director of Athletic Communications.....	Tom Chen
Women's Basketball Contact.....	Jeremy Cohen
Office Phone.....	631-632-6328
Email.....	jeremy.cohen@stonybrook.edu
Cell Phone.....	860-690-3482
Fax.....	631-632-8841
Website.....	GoSeawolves.org





Numerical

No.	NAME	Yr.	Pos.	Ht.	HOMETOWN/HIGH SCHOOL/PREVIOUS SCHOOL
3	Amanda Corona	So.	G	5-9	North Hollywood, Calif./Hart
4	Misha Horsey	Sr.	G	5-5	Wyncote, Pa./Cheltenham
5	Gerda Gatling	So.	F	5-11	Woodbridge, Va./Forest Park
11	Dani Klupenger	So.	G	5-9	Aurora, Ore./Central Catholic
12	Tamiel Murray	Jr.	G	5-6	Teaneck, N.J./Teaneck
14	Morghan Farnsworth	Fr.	F	6-1	Cornish, N.H./Windsor (Vt.)
15	Jodi Plikus	Sr.	G	5-8	Waterford, Conn./Waterford
21	Taylor Burner	So.	C	6-4	Port Jefferson, N.Y./Port Jefferson
22	Sam Landers	So.	G	5-7	Springfield, Va./West Springfield
23	Whitney Davis	Jr.	G/F	5-10	Muskegon, Mich./Muskegon/Muskegon CC
24	Talisha Bridges	So.	G/F	5-10	Kalamazoo, Mich./Loy Norrix/New Orleans
32	Kirsten Jeter	Sr.	F	5-10	Elmont, N.Y./Elmont
42	Destiny Jacobs	Jr.	C	6-1	Glen Burnie, Md./McDonogh
44	Juanita Cochran	So.	C	6-2	Saginaw, Mich./Saginaw Arthur Hill/New Orleans

Head Coach: Michele Cherry (Arizona State, '92) Fourth Season

Assistant Coach: Evelyn Thompson (Auburn, '90) Second Season

Assistant Coach: Emily Hardy (New Hampshire, '06) Third Season

Assistant Coach: Kristy Nix (Rhode Island College, '07) Third Season

Pronunciation Guide

Misha Horsey.....Mee-shuh
Tamiel Murray..... Tuh-meal

Jodie Plikus Ply-kiss
Juanita Cochran Wha-NEE-ta

Alphabetical

No.	NAME	Yr.	Pos.	Ht.	HOMETOWN (HIGH SCHOOL/PREVIOUS SCHOOL)
24	Talisha Bridges	So.	G/F	5-10	Kalamazoo, Mich./Loy Norrix/New Orleans
21	Taylor Burner	So.	C	6-4	Port Jefferson, N.Y./Port Jefferson
44	Juanita Cochran	So.	C	6-2	Saginaw, Mich./Saginaw Arthur Hill/New Orleans
3	Amanda Corona	So.	G	5-9	North Hollywood, Calif./Hart
23	Whitney Davis	Jr.	G/F	5-10	Muskegon, Mich./Muskegon/Muskegon CC
14	Morghan Farnsworth	Fr.	F	6-1	Cornish, N.H./Windsor (Vt.)
5	Gerda Gatling	So.	F	5-11	Woodbridge, Va./Forest Park
4	Misha Horsey	Sr.	G	5-5	Wyncote, Pa./Cheltenham
42	Destiny Jacobs	Jr.	C	6-1	Glen Burnie, Md./McDonogh
32	Kirsten Jeter	Sr.	F	5-10	Elmont, N.Y./Elmont
11	Dani Klupenger	So.	G	5-9	Aurora, Ore./Central Catholic
22	Sam Landers	So.	G	5-7	Springfield, Va./West Springfield
12	Tamiel Murray	Jr.	G	5-6	Teaneck, N.J./Teaneck
15	Jodi Plikus	Sr.	G	5-8	Waterford, Conn./Waterford

TV/RADIO CHART



#24 • TALISHA BRIDGES
5-10 • So. • G/F
Kalamazoo, Mich.



#21 • TAYLOR BURNER
6-4 • So. • C
Port Jefferson, N.Y.



#44 • JUANITA COCHRAN
6-2 • So. • C
Saginaw, Mich.



#3 • AMANDA CORONA
5-8 • So. • G
North Hollywood, Calif.



#23 • WHITNEY DAVIS
5-10 • Jr. • G/F
Muskegon, Mich.



#14 • MORGHAN FARNSWORTH
6-1 • Fr. • F
Cornish, N.H.



#5 • GERDA GATLING
5-11 • So. • F
Woodbridge, Va.



#4 • MISHA HORSEY
5-5 • Sr. • G
Wyncote, Pa.



#42 • DESTINY JACOBS
6-1 • Jr. • C
Glen Burnie, Md.



#32 • KIRSTEN JETER
5-10 • Sr. • F
Elmont, N.Y.



#11 • DANI KLUPENGER
5-9 • So. • G
Aurora, Ore.



#22 • SAM LANDERS
5-7 • So. • G
Springfield, Va.



#12 • TAMIEL MURRAY
5-6 • Jr. • G
Teaneck, N.J.



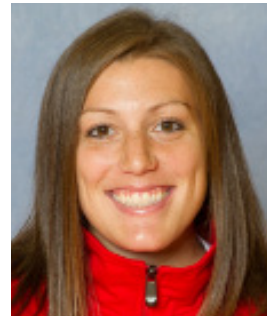
#15 • JODIE PLIKUS
5-8 • Sr. • G
Valley Stream, N.Y.



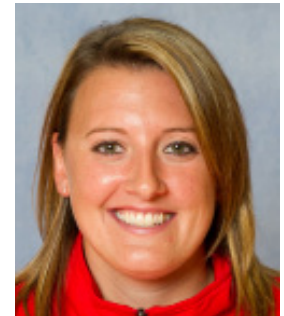
MICHELE CHERRY
Head Coach
Fourth Season



EVELYN THOMPSON
Assistant Coach
Second Season



EMILY HARDY
Assistant Coach
Third Season



KRISTY NIX
Assistant Coach
Third Season

HEAD COACH MICHELE CHERRY

MICHELE CHERRY

Head Coach
Fourth Season
Arizona State, '92



Named head coach on June 6, 2007, Michele Cherry enters her fourth season at the helm of Stony Brook University's women's basketball program in 2010-11. Cherry has been a part of the coaching staff since 2004 and brings a unique blend of professional and collegiate coaching experience to the Seawolves. Since taking over the head coaching duties, Cherry's players have succeeded in the classroom and on the court, having earned six America East All-Conference honors.

Last season, Cherry guided Stony Brook to a fourth place in the America East standings, its best finish since 2007. The Seawolves also advanced to the America East semifinals for the first time since 2006. Junior **Kirsten Jeter** (Elmont, N.Y.), a 2009 All-America East second team selection, became the 14th player in program history to record 1,000 career points and was also just the sixth player to have at least 1,000 career points and 500 rebounds.

Leading a team without a senior in 2008-09, Cherry's team battled against top-tier quality opponents Michigan State, Penn State and St. John's. A season that saw the Seawolves put together a three-game conference winning streak, Cherry coached forward Kirsten Jeter to an America East All-Conference selection while guard Jodie Plikus earned All-Academic honors.

In her first season, Cherry guided the Seawolves to an 8-23 record including wins in two of the last three games. In the final regular season game of the season, Stony Brook beat New Hampshire, 77-37 in the largest margin of victory in its nine-year Division I history. The Seawolves would follow the win over the Wildcats with an upset-victory over No. 8 Maine in the first round of the America East Tournament. Cherry coached two Seawolves to America East honors in 2007-08. Dana Ferraro earned third team all-conference as well as all-defensive honors and Kirsten Jeter was an all-rookie selection. Under Cherry's tutelage, Ferraro became the second leading rebounder in Stony Brook history, male or female, and just the third player in the history of the America East to lead the conference in rebounding at least three straight years.

Cherry took over as head coach of the women's basketball program in 2007 after three seasons as lead assistant under head coach and mentor, Maura McHugh. During the previous two years, Cherry helped guide Stony Brook to unprecedented success at the Division I level. In the 2006-2007 season, she helped lead Stony Brook to an 18-11 record including a program best 14-2 conference record. Cherry coached two of the best players in Stony Brook history, Mykeema Ford and Jessica Smith. Ford and Smith finished second and third in career scoring with 1,831 and 1,710 points, respectively. In 2005-2006, the Seawolves went 20-10 en route to a berth in the postseason WNIT, a first for the women's basketball team.

Cherry arrived at Stony Brook after spending three seasons with the Sacramento Monarchs of the Women's National Basketball Association (WNBA) as an assistant coach under McHugh from 2001-03. During her tenure with the Monarchs, she helped guide the team to an appearance in the Western Conference Finals and coached several Olympians and all-conference players including Yolanda Griffith, Ticha Penicheiro, Kara Wolters and Ruthie Bolton-Holifield.

Before her time in Sacramento, Cherry spent two seasons as an assistant coach at Cal State-Northridge and one year with Northeast Louisiana.

Cherry also spent one season as an assistant under McHugh with the first-year franchise Long Beach StingRays of the American Basketball League (ABL) in 1997. That season, she helped lead the team to a 32-22 record and to within one game of the ABL title. Cherry coached Clarissa Davis, a recent inductee into the Women's Basketball Hall of Fame and one of the greatest players in the University of Texas history while with the StingRays.

Cherry began her playing career at Oregon State University in 1987-88 before transferring to Arizona State University, where she played for two seasons under McHugh from 1990-92, graduating in 1992 with a bachelor's degree in finance. She began her coaching career at her alma mater the following year, serving as an assistant coach for the 1992-93 campaign.



The Cherry File

COACHING CAREER

2007-Pres.	Head Coach, Stony Brook University
2004-07	Assistant Coach, Stony Brook University
2001-03	Assistant Coach, Sacramento Monarchs, WNBA
1999-01	Assistant Coach, Cal State Northridge
1997-98	Assistant Coach, Long Beach StingRays, ABL
1994-95	Assistant Coach, Northeast Louisiana
1992-93	Assistant Coach, Arizona State University

PLAYING CAREER

1987-88	Oregon State University
1990-92	Arizona State University

2010-11 PREVIEW

Stony Brook University women's basketball team enters the 2010-11 season with a lot to be optimistic about. The Seawolves and fourth-year head coach Michele Cherry are coming off a season in which the Seawolves had their best conference finish, fourth, since 2007, in addition to advancing to the America East semifinals for the first time since 2006.

The Seawolves bring back 10 letter-winners from that squad including four starters. That group accounted for over 72 percent of the Seawolves points and nearly 70 percent of their rebounding last season.

Leading the way is senior **Kirsten Jeter**, a 2009 second team all-conference selection and preseason candidate for America East Player of the Year. The versatile forward finished six in the league scoring last season and fourth in rebounding and steals.

SBU also has brought in a talented group of newcomers that should bolster the Seawolves already deep lineup. Included in that group are sophomore transfers, **Juanita Cochran** and **Talisha Bridges**, who each saw important minutes for the University of New Orleans last season and should be set to contribute immediately for Stony Brook this season.

Add all those things up and you have a team that Cherry and the Seawolves believe can compete for the first conference championship in program history.

Seniors

Cherry will look to seniors, Jeter and **Misha Horsey** to lead her veteran-laden team in 2010-11. The duo have combined to start 172 games and score 1800 points since coming to Stony Brook.

The Seawolves counted on Jeter to do a little bit of everything last season as she led the team in scoring (14.4 ppg.), rebounding (224) and steals (63) in addition to averaging over 30 minutes per game. Cherry believes that the Seawolves increased depth will not allow opposing teams to focus on Jeter and will enable her to be even more dangerous.

Cherry calls Horsey an 'extension of her on the floor' and she believes that her leadership will be important to the Seawolves success this season. The Seawolves floor leader led the America East in assist/turnover ratio (1.6) last season in

addition to reaching double-figures in scoring 12 times.

Closing out the Seawolves senior class is **Jodie Plikus**. The Waterford, Conn. native missed all of last season due to injury but the coaching staff believes her shooting touch will help to stretch defenses. The sharpshooter led Stony Brook in threes in 2008-09 with 31 and has made 58 trifectas in her career.

Juniors

Stony Brook has three juniors on this year's roster led by center **Destiny Jacobs** and guard **Tamiel Murray**.

Jacobs had a breakout year for the Seawolves last season, averaging over two more points and rebounds per game than the previous year. Jacobs appeared in all 30 games, making 19 starts and Cherry and the Seawolves will count her to be even more of a force in the post this season.



Junior Tamiel Murray

Murray has started 45 games over the past two seasons and has been one of the Seawolves most reliable players. Last season she started 20 games and averaged 19.3 minutes per game. Cherry leaned on her experience late in the season as she played 40 minutes in the Seawolves America East quarterfinal win over Binghamton. Murray worked hard on her shooting stroke in the offseason and the Seawolves expect her to pick up some of the scoring load this season.

Joining the fold for the Seawolves this season will be junior college transfer **Whitney Davis**. Last season she was named to the NJCAA All-America second team at Muskegon Community College, while leading the Western Conference in scoring with a 17.7 points per game average. She also pulled down 12.8 rebounds which ranked ninth nationally. A versatile guard, who can score in a number of the way, Cherry will count on Davis to shoulder some of the scoring load this season.

Sophomores

The Seawolves have a loaded sophomore class comprised of seven players which includes five returners and two transfers.

Sam Landers returns after appearing in all 30 games last season including 14 starts. The Springfield, Va. native aver-

aged 17.9 minutes per game last season and Cherry expects her to shoulder the ball-handling duties with Horsey.

Also adding depth to the Seawolves backcourt will be **Amanda Corona** and **Dani Klupunger**. Corona appeared in 22 games last season and Cherry expects her to provide depth at both guard positions this season. The Seawolves will look to Klupunger to provide a scoring spark off the bench. She showed she could fill it up last season, scoring 11 points against Boston University and 10 points at Maryland.

One of the Seawolves most athletic players, Cherry and the coaching staff are expecting major contributions from **Gerda Gatling**. A prototypical small forward, Gatling showed she could contribute last year as she played in 29 games and averaged over 15 minutes per contest.

The tallest player on Stony Brook's roster at 6-4, **Taylor Burner** played in 22 games last season. Burner will provide depth for the Seawolves in the post.

In addition to the five returners, the Seawolves will also welcome transfers, Cochran and Bridges, into the fold. The duo comes from the University of New Orleans, which moved from Division I to Division III after last season.

Bridges appeared in 28 games last season for the Pioneers, averaging 5.2 points and 3.1 rebounds in 12.5 minutes per game. A versatile player, who can play multiple positions, Cherry sees Bridges as a lockdown defender who has three-point range and is quick to the basket.

Cochran started the final 19 games of the season for UNO in 2009-10, averaging 5.3 points and 6.0 rebounds per game. Cherry sees her as a legit post presence, who can score in the block and rebound.

Freshman

Morghan Farnsworth is the lone freshman on Cherry's squad this year. The 6-1 forward led Windsor High School to two Vermont Division III state titles and was a 2010 McDonald's All-American nominee. A 2010 Burlington Free Press first team all-state selection, Farnsworth will provide even more depth at the forward position.

Five home games, including two contests against opponents that advanced to the postseason last year, highlight the Seawolves non-conference schedule.

The 12-game schedule features games against four teams that won 18 or more games last season.

The Seawolves kick off the season at the Phoenix Classic in Elon, N.C., facing off against Troy on Friday, Nov. 12 before taking on Atlantic 10 opponent Fordham on Saturday. SBU will then play five consecutive home games over the next two- and-a-half weeks beginning with a contest against Long Island rival Hofstra on Nov. 18. The Pride won 20 games a season ago and advanced to the WNIT.



Junior Destiny Jacobs

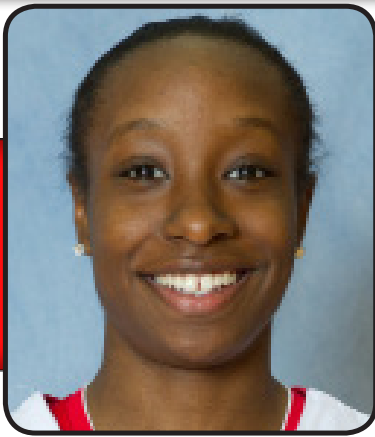
(N.Y.).

Following a game against Nichols State on Nov. 24, the Seawolves will welcome Monmouth to Pritchard Gymnasium (Nov. 30). Stony Brook will then take on Fairleigh Dickinson on Dec. 2 before closing the homestand against the Iona Gaels on Dec. 5. Iona also advanced to the WNIT a season ago.

SBU returns to the road on Dec. 9, traveling to Virginia for its first ever match-up with George Mason. Following a trip to the nation's capital for a matchup with the Colonials of George Washington (Dec. 11), the Seawolves head to Brooklyn to take on Long Island (Dec. 19). The Blackbirds went 22-10 in 2009-10 and advanced to the Northeast Conference championship game.

Stony Brook then returns to Virginia to take on CAA power Old Dominion (Dec. 21) before wrapping up the non-conference slate with a New Year's Eve game against St. Francis

Schedule



Misha Horsey

5-5 • Sr. • G • Wyncote, Pa.

#4

Cheltenham
Sociology

2009-10 - Junior

Had 12 double-digit scoring efforts... led the America East in assist/turn-over ratio (1.6)... was 71st in the NCAA... ranked seventh in the conference in assists per game (3.3)... led the team in three-pointers made... posted season-highs in points (23) and rebounds (8) against New Hampshire (2/3)... went 9-of-17 from the field against the Wildcats... scored 20 points in the Seawolves' America East Championship quarterfinal win against Binghamton (3/5)... dished out seven assists against Maine (2/13)... handed out five or more assists seven times... had three-straight games with four steals (2/3-2/10)... played a career-high 42 minutes against Albany (2/10)... knocked down four threes against Binghamton (1/9)... had a streak of 15-straight made free throws (12/9-1/28).

2008-09 - Sophomore

Started every game for the second straight season... led the team with 35.1 minutes per game... averaged 10.3 points, 2.9 rebounds, 3.5 assists per game and 1.2 steals per game... ranked 17th in the conference in scoring and sixth in assists and minutes per game... scored in double digits in 13 games... had game-high 22 points, five steals and five assists at Maine (M7)... posted 10 points at UMBC (F21)... career-high eight assists and seven rebounds vs. Maine (F4)... went 3-for-5 from three vs. UMBC (J31)... went 7-for-10 from the field at Albany (J27)... career-high 24 points at Binghamton (J18)... opened conference play with 16 points vs. Boston University (J7)... had 16 points on 8-for-14 shooting vs. San Jose State (D29)... led Seawolves with 16 points in first victory of season vs. Yale (D8)... scored 15 points on 5-11 shooting vs. Northeastern (D6).

2007-08 - Freshman

Named to America East Commissioner's Honor Roll... first freshman since Jessica Smith to start each game... averaged 5.7 points 2.1 assists and 1.8 rebounds per game... scored six points vs. Hartford in America East Quarterfinal (M14)... had eight points vs. Maine in America East First Round game (M13)... registered 10 points and five rebounds vs. New Hampshire (M8)... perfect shooting vs. Boston University; 3-3 from the field, 1-1 from behind the arc and 2-2 from the free throw line (M1)... had six points, seven assists and three rebounds vs. Binghamton (F27)... scored seven points to go along with four steals vs. Albany (F23)... six points and three steals at Maine (F16)... had eight points and three assists at Albany (F2)... had four points, four rebounds and four assists vs. Maine (J16)... scored 10 points and had three assists vs. Brown (D30)... scored 12 points vs. Dartmouth...

also played a career-high 38 minutes (D14)... recorded seven points, five assists and four rebounds vs. Central Connecticut State (D12)... opened up collegiate career with eight points, six assists, four rebounds and two assists in 25 minutes vs. Iona (N9).

High School

A three-year letterwinner at Cheltenham High School for coach Bob Schaefer... averaged 11 points, seven assists and two steals her senior year... school's all-time leader in assists with 538... honorable mention all-state as a senior... also a two-time first team all Suburban One conference, Rise Magazine all-greater Philadelphia and all-southeastern Pennsylvania... co-captained team to 2007 Pennsylvania 4A state championship... voted by All-Star Girls Report as one of the top 300 players in the country... voted to 2007 All-Star Labor Classic and Suburban One all-star teams... 2006 Adidas top-ten all-american camp participant... competed against Elena Delle Donne, the top incoming recruit in the country.

Personal

Misha Lynne Horsey... born June 30, 1989 in Philadelphia, Pa... daughter of Cheryl and Michael Horsey... sister of Moneque and Mechel... majoring in arts & sciences.

Question & Answer with Misha Horsey ...

Nickname..... Mish
 Favorite Spot on Campus..... Gym
 Favorite Midnight Snack..... Cereal
 Most Prized Possession..... Phone
 Why did you choose jersey number? Dawn Staley wears number No. 5, so I
 wanted to be one number lower
 Funniest Person on the team..... Gerda Gatling
 Best friend on another women's college basketball team..... Gloria Brown (UTEP)
 WNBA player you would compare yourself to..... Dawn Staley
 One place you would like to visit in the next five years..... Brazil
 Most Impressive Person I've Met..... Ray Allen
 One restaurant I wish could come to Stony Brook..... Chick-Fil-A
 Record I dream of breaking..... Assist
 If a movie was made about you, which actress would play you?..... Sanaa Lathan

Career Statistics

Year	G-GS	Min-Avg.	FG-FGA	Pct.	3FG-3FGA	Pct.	FT-FTA	Pct.	Reb.-Avg.	A	TO	BLK	ST	Pts.-Avg.
2009-10	30-29	995-33.2	86-292	.295	17-72	.236	54-73	.740	75-2.5	98	62	3	45	243-8.1
2008-09	29-29	1018-35.1	120-343	.350	28-93	.301	32-45	.711	83-2.9	102	103	0	36	300-10.3
2007-08	31-31	891-28.7	67-203	.330	14-60	.233	28-41	.683	57-1.8	64	77	0	36	176-5.7
Total	90-89	2904-32.3	273-838	.326	59-225	.262	104-159	.654	215-2.4	264	242	3	117	719-8.0

Career America East Statistics

Year	G-GS	Min-Avg.	FG-FGA	Pct.	3FG-3FGA	Pct.	FT-FTA	Pct.	Reb.-Avg.	A	TO	BLK	ST	Pts.-Avg.
2009-10	16-16	587-36.7	53-169	.314	14-55	.255	26-35	.743	50-3.1	63	32	0	30	146-9.1
2008-09	16-16	553-34.6	68-198	.343	21-59	.356	21-31	.677	53-3.3	66	62	0	20	178-11.1
2007-08	16-16	484-30.3	33-96	.344	7-29	.241	15-23	.652	29-1.8	35	39	0	19	88-5.5
Total	48-48	1624-33.8	154-463	.333	42-143	.294	62-89	.697	132-286	164	133	0	69	412-8.6

TABLE OF CONTENTS



Kirsten Jeter

5-10 • Sr. • F • Elmont, N.Y.

#32

Elmont
Sociology

2009-10 - Junior

Named to the America East All-Conference second team... named to the Terrapin Classic All-Tournament team... finished sixth in points, fourth in rebounds and fourth in steals in the America East... scored in double-figures in 24 of the teams 30 games... had six 20+ point games... had five double-doubles... scored a season-high 24 points against UMBC (1/28)... made a career-high four threes against the Retrievers... also had 12 rebounds and dished out four assists in that game... pulled down a career-high 16 rebounds against Boston University (1/13)... also scored 16 points in that game... scored 19 points and grabbed nine rebounds in the Seawolves' America East Championship semifinal loss to Hartford (3/7)... had 20 points, six rebounds and five assists against St. Francis (N.Y.) (12/6)... posted 21 points and ten rebounds against New Hampshire (1/6).

2008-09 - Sophomore

Third team all-conference selection... averaged 12.5 points, 6.2 rebounds and 2.1 steals per game, all team-highs... started all 29 games... scored in double figures 19 times... averaged 14.9 points and 7.3 rebounds per game in conference play... tallied a game-high 20 points vs. Hartford in America East Quarterfinals (M13)... had a double-double with 14 points and 10 rebounds in career-high 38 minutes vs. Albany (M4)... scored 16 points at New Hampshire (F25)... career-high 25 points and added 11 rebounds at UMBC (F21)... had 23 points and seven rebounds vs. Vermont (F17)... double-double with 14 points and 11 rebounds in 30 minutes vs. Binghamton (F14)... had 13 points at Boston University (F11)... game-high 24 points on 10-of-21 shooting vs. UMBC (J31)... tied a career-high with 12 rebounds at Hartford (J24)... had 12 points and 10 rebounds vs. New Hampshire (J21)... scored 18 points of 9-of-14 shooting at Binghamton (J18)... opened America East play with 20 points vs. Boston University (J7)... scored 15 points vs. San Jose State (D29)... went for 13 points and seven rebounds vs. Delaware (D28)... had 11 points and four rebounds at Penn State (N19).

2007-08 - Freshman

Averaged 9.3 points and 4.5 rebounds per game... named to America East All-Rookie team... named Seawolves' most valuable player and most improved player... played in all 31 games... scored in double figures 15 times... shot over 50 percent or better from the field in 11 games... had 21 points, 12 rebounds, six steals and two blocks in just 29 minutes against Maine (M13)... recorded 10 points, six rebounds and three assists vs. New Hampshire (M8)... posted 14 points and seven rebounds against Binghamton (F27)... scored 10 points and had seven rebounds vs. Albany (F23)... had 15 points and five rebounds vs. UMBC (F13)... went 8-15 from the floor for 16 points and five rebounds at Vermont (F10)... recorded 15 points, six rebounds and

four steals at Albany (F2)... shot 7-10 from the floor and 3-4 from the foul line against conference-leader Hartford (J29)... scored 13 points vs. Maine (J16)... shot 5-10 from the floor and a perfect 4-4 from the free throw line for 14 points vs. Rhode Island (D29)... started first career game at Hofstra and had 16 points, five rebounds, two assists and two steals (D4)... had seven points in six minutes off the bench in her college debut against Iona (N9).

High School

A four-year letterwinner at Elmont High School for coach Gregg Petrocelli... named third-team all-state as a senior, fifth team as a junior... all Long Island and all Nassau-County as a senior... one of the top post players on Long Island as a senior... averaged 20 points and 10 rebounds as a senior... led Elmont to the Nassau Conference II title... member of NYC Heat AAU team... also played volleyball and lacrosse.

Personal

Kirsten Amber Jeter... born February 8, 1989 in Hempstead, N.Y.... daughter of Anne and Kevin Jeter... sister of Erika, Takiyah, Kevin and Philandis.

Question & Answer with Kirsten Jeter

Favorite actress	Takiyah Jeter (sister)
Favorite spot on campus	locker room
Favorite TV Show	True Blood
Favorite Vacation Spot	California
Favorite Movie	Love & Basketball
If a movie was made about you, which actress would play you?	Sanaa Lathan
Favorite non-sports hero	My Dad
Favorite midnight snack.....	Pudding snacks
Cell Phone Ring.....	Wanna Be a Billionaire
Funniest person on the team.....	Sam Landers
First job.....	camp counselor
Record I dream of breaking.....	career points
Most impressive person I've met..	Courtney Sanfelippo (Stony Brook Assistant AD for Student-Athlete Development
Most interesting class you've taken at Stony Brook	Theater
One restaurant I wish could come to Stony Brook	Popeyes
If I were head coach for a day, I would	Coach to have fun but work hard at the same time

Career Statistics

Year	G-GS	Min-Avg.	FG-FGA	Pct.	3FG-3FGA	Pct.	FT-FTA	Pct.	Reb.-Avg.	A	TO	BLK	ST	Pts.-Avg.
2009-10	30-30	927-30.9	168-417	.403	14-48	.292	81-112	.723	224-7.5	57	98	13	63	431-14.4
2008-09	29-29	789-27.2	147-362	.406	6-15	.400	62-83	.747	180-6.2	38	90	15	60	362-12.5
2007-08	31-24	662-21.4	111-277	.401	0-4	.000	66-97	.680	141-4.5	20	79	7	40	288-9.3
Total	90-83	2378-26.4	426-1056	.403	20-67	.299	209-292	.716	545-6.1	115	267	35	163	1081-12.0

Career America East Statistics

Year	G-GS	Min-Avg.	FG-FGA	Pct.	3FG-3FGA	Pct.	FT-FTA	Pct.	Reb.-Avg.	A	TO	BLK	ST	Pts.-Avg.
2009-10	16-16	519-32.4	92-238	.387	12-37	.324	39-57	.684	131-8.2	28	54	7	36	235-14.7
2008-09	16-16	470-29.4	98-224	.438	5-12	.417	37-49	.755	117-7.3	23	55	8	36	238-14.9
2007-08	16-15	404-25.3	68-174	.391	0-2	.000	39-59	.661	91-5.7	12	49	1	23	175-10.9
Total	48-47	1393-29.0	258-636	.406	17-51	.333	115-165	.697	339-7.1	63	158	16	95	648-13.5

2010-11 ROSTER INFORMATION



Jodie Plikus

5-8 • Sr • G • Waterford, Conn
#15 Waterford
 Health Sciences

2009-10 - Junior

Redshirted.

2008-09 - Sophomore

Played in 17 games, starting three... averaged 7.6 points and 1.8 rebounds per game... averaged 18.6 minutes per game... missed most of the non-conference season due to injury... had 15 points in 31 minutes vs. Hartford (F28)... scored eight points vs. Vermont (F17)... had 10 points in 22 minutes vs. Binghamton (F14)... had nine points at Boston University (F11)... scored a career-high 23 points on 8-for-12 shooting, 5-for-9 from three and a pair of free throws at Hartford (J24)... scored 11 points vs. New Hampshire (J21) and at Binghamton (J18)... made season-debut at Penn State, hitting a pair of threes for six points (N19).

2007-08 - Freshman

Played in 28 games... named to America East Commissioner's Honor Roll... averaged 5.4 points and 1.0 rebounds per game... scored in double figures six times... had 13 points on 5-6 shooting including 3-4 from behind the arc vs. New Hampshire (M8)... scored eight points in 10 minutes vs. Boston University (M1)... registered a career-high 15 points in 14 minutes vs. Binghamton (F27)... scored six points at Maine (F16)... played 21 minutes vs. UMBC, scoring seven points (F13)... had eight points vs. Brown (D30)... posted 11 points vs. Central Connecticut in 19 minutes (D12)... scored 10 points in 12 minutes at Yale (D7)... led Seawolves with 14 points at Manhattan (N23)... came off the bench to score 11 points on 4-9 shooting (3-7 from behind the arc) in collegiate debut vs. Iona (N9).

High School

A four year letterwinner for the Waterford Lancers under coach Rob Von Achen... 2007 Connecticut High School Coaches Association Class L first team all-state as a student and player ... 2007 Hartford Courant first team all-state, 2007 New Haven Register second team all-state... 2007 New London Day first team all-area... 2007 Norwich Bulletin All-Area... 2007 ECC All-Tourney team... 2007 ECC All-Star... 2006 New Haven Register honorable mention all-state... 2006 New London Day first team all-area... 2006 ECC first-team all-conference... a four-year high honor roll student... also played soccer and softball.

Personal

Jodie Ann Plikus... born September 23, 1989 in New London, Connecticut... daughter of Patricia and Robert Plikus... sister of Erin... majoring in health sciences.

Up Close and Personal with Jodie Plikus ...

Nicknames..... Jodes, Jo
 Favorite spot on campus Staller steps
 Favorite TV Show Roseanne
 Favorite midnight snack..... ice cream
 My most prized possession My 'B' (Blanket)
 Why did you choose your jersey numbers?..... I've had the same number since I was nine
 If a movie was made about you, which actress would play you? Cameron Diaz
 Cell phone ring 'So Says I' (The Shins)
 Person(s) I look up to most..... Mother & sister
 Funniest person on the team..... Juanita Cochrin
 Best friend on another women's college basketball team Kerriranne Dugan
 (Central Connecticut State)
 WNBA player I compare myself to..... Lindsay Whalen
 Most interesting class I've taken at Stony Brook Making Peace w/ the 60s
 One restaurant you wish could come to Stony Brook..... Dairy Queen

Career Statistics

Year	G-GS	Min-Avg.	FG-FGA	Pct.	3FG-3FGA	Pct.	FT-FTA	Pct.	Reb.-Avg.	A	TO	BLK	ST	Pts.-Avg.
2009-10		Did not play.												
2008-09	17-3	316-18.6	43-139	.309	31-109	.284	13-17	.765	30-1.8	16	16	0	8	130-7.6
2007-08	28-0	379-13.5	54-177	.305	27-119	.227	15-18	.833	28-1.0	13	24	1	14	150-5.4
Total	45-3	695-15.4	97-316	.307	58-228	.254	28-35	.800	58-1.3	29	40	1	22	280-6.2

Career America East Statistics

Year	G-GS	Min-Avg.	FG-FGA	Pct.	3FG-3FGA	Pct.	FT-FTA	Pct.	Reb.-Avg.	A	TO	BLK	ST	Pts.-Avg.
2009-10		Did not play.												
2008-09	15-2	279-18.6	38-124	.306	28-97	.289	13-17	.765	26-1.7	15	15	0	6	117-7.8
2007-08	13-0	162-12.5	25-81	.309	9-44	.205	4-5	.800	16-1.2	5	8	0	6	63-4.8
Total	28-2	441-15.8	63-205	.307	37-141	.262	17-22	.773	42-1.5	20	22	0	12	180-6.4

TABLE OF CONTENTS



Destiny Jacobs

6-1 • Jr. • C • Glen Burnie, Md.

#42

McDonogh
Business

2009-10 - Sophomore

Reached double-figures in rebounds seven times... had three double-doubles... finished 10th in the America East in rebounding... scored 15 points and grabbed ten rebounds against Maine (1/16)... had ten points and 11 boards against St. Francis (N.Y.) (12/6)... posted 12 points and 13 rebounds against Sacred Heart (11/24)... scored nine points, grabbed seven boards and had three blocks against Monmouth (12/2)... pulled down ten rebounds in the Seawolves' America East Championship quarterfinal win over Binghamton (3/5).

2008-09 - Freshman

Played in 28 games... averaged 3.9 points and 4.3 rebounds per game as a freshman... had six points and eight rebounds vs. Hartford in America East Tournament (M13)... tied career-high with six free throws made at Maine (M7)... had six points and five rebounds at UMBC (F21)... six points and a career-high 11 rebounds vs. Binghamton (F14)... scored 10 points including 6-of-6 from the line to go along with nine rebounds vs. Manhattan (D15)... career-high 13 points on 5-of-10 shooting and 3-of-4 from the line vs. Yale (D8)... played a career-high 30 minutes at Michigan State (N16).

High School

Four-year letterwinner at the McDonough School for coach Tom Gizzi... attended same high school as former men's basketball player Mike Popoko '07... All Star Girls Report lists Jacobs as 'an athlete who has a strong body and the ability to score on the block. She is a banger who should give Stony Brook an inside presence'... led team to an 89-23 record in four years... two-time All-Baltimore County selection... McDonald's All-American nominee as a senior... averaged a double-double as a senior; 13 points and 10 rebounds per game... led team to second-place finish in IAAM tournament... played in Maryland-Pennsylvania All-Star Game... played AAU ball for Maryland Hurricanes... one of nine players from Maryland Hurricanes to have earned a scholarship... also played four years of volleyball.

Personal

Destiny Chanee' Jacobs... born February 28, 1991 in Prince Georges County, Md.... daughter of Curtis and Michele Jacobs... both parents were student-athletes at Morgan State University in Baltimore, Md.... majoring in business.

Question & Answer with Destiny Jacobs ...

Nickname.....Dest
Favorite midnight snack.....milk & cookies
Favorite spot on campus.....My room
Favorite Sports Team.....Miami Heat
Favorite TV Show.....George Lopez
Most interesting class you've taken at Stony Brook.....Theater
If a movie was made about you, which actress would play you.....Queen Latifah
Person I look up to most.....Mom
Place you would like to visit in the next five years.....Hawaii
Most Famous People I've Met.....Jonas Brothers
WNBA Player you would compare yourself to.....Tina Charles
Most influential Person.....My Mother
Favorite Food.....Corn Pudding
Dream Job.....Own my own company
One restaurant you wish could come to Stony Brook.....Golden Corral
Best friend on another women's college basketball team.....Kandice Green
.....(Seton Hall)

Career Statistics

Year	G-GS	Min-Avg.	FG-FGA	Pct.	3FG-3FGA	Pct.	FT-FTA	Pct.	Reb.-Avg.	A	TO	BLK	ST	Pts.-Avg.
2009-10	30-19	735-24.5	61-177	.345	0-0	.000	57-76	.750	196-6.5	16	47	12	27	179-6.0
2008-09	28-0	518-18.5	39-104	.375	0-0	.000	32-53	.604	120-4.3	12	40	6	22	110-3.9
Total	58-19	1253-21.6	100-281	.356	0-0	.000	89-129	.690	316-5.4	28	87	18	49	289-5.0

Career America East Statistics

Year	G-GS	Min-Avg.	FG-FGA	Pct.	3FG-3FGA	Pct.	FT-FTA	Pct.	Reb.-Avg.	A	TO	BLK	ST	Pts.-Avg.
2008-09	16-0	240-15.0	20-50	.400	0-0	.000	12-24	.500	59-3.7	5	16	2	10	52-3.3
2009-10	16-9	375-23.5	31-94	.330	0-0	.000	28-38	.737	93-5.8	8	18	5	9	90-5.6
Total	32-9	615-19.2	51-144	.354	0-0	.000	40-62	.645	152-4.8	13	34	7	19	142-4.4

2010-11 ROSTER INFORMATION



Tamiel Murray

5-6 • Jr. • G • Teaneck, N.J.

#12

Teaneck
Health Science

2009-10:

Scored a season-high nine points against New Hampshire (1/6) and Binghamton (2/6)... also grabbed a career-high 11 rebounds against the Bearcats... pulled down eight boards in her next game against Albany (2/10)... tied a career-high with six steals against Binghamton (1/9)... played all 40 minutes in the Seawolves' America East Championship quarterfinal win over Binghamton (3/5)... dished out four assists in three different games... averaged 5.1 rpg in her last eight games of the season... started 20 of the 28 games she played in.

2008-09

Played in all 29 games, starting final 25... averaged 2.8 points, 2.0 rebounds and 1.3 assists per game... had just 33 turnovers in 592 minutes... had a 1.2 assist/turnover ratio... shot .750 from the free throw line (15-20)... had nine points on 4-of-6 shooting (1-of-2 from three) vs. Maine (2/4)... recorded eight points on 4-of-10 shooting at Hartford (J21)... had seven points at Binghamton (J18)... had eight points, six assists and two rebounds in 39 minutes vs. San Jose State (D29)... career-high 10 points at St. John's (11/28)... had five points at Penn State (N19) and at Michigan State (N16).

High School:

Four-year letterwinner at Teaneck High School for coach Shenee' Clarke... two-time All-Bergen County selection and second-team All-North Jersey as a junior... earned four time all-league selection... led team to 25-4 record as a senior... averaged 9.4 points, 5.1 rebounds, 3.7 assists and 3.5 steals as a senior... team was 71-14 in four years... National Honor Society and Peer Leadership Program member... president of the school's black youth organization.

Personal:

Tamiel Danielle Murray... born July 21, 1990 in New York, N.Y.... daughter of Todd and Karen Murray... sister of Todd... majoring in health science.

Up Close and Personal with Tamiel Murray ...

Favorite spot on campus SAC
 Favorite TV Show The Game
 Favorite midnight snack.....Zebra Cakes
 My most prized possession Cell phone
 Why did you choose your jersey numbers?..... It's a family number
 If a movie was made about you, which actress would play you? Sanaa Lathan
 Cell phone ringAshton Martin music
 Person(s) I look up to most..... Mother
 Funniest person on the team..... Juanita Cochran
 Best friend on another women's college basketball team Tiffany Cannee
(USF)
 WNBA player I compare myself to.....Cappie Poindexter
 Most interesting class I've taken at Stony Brook Sociology of Drugs & Alcohol
 One restaurant you wish could come to Stony Brook.....Red Lobster
 If I were head coach for a day, I would take my team to the championship
 Nobody would believe I watch this TV showSay Yes to the Dress

Career Statistics

Year	G-GS	Min-Avg.	FG-FGA	Pct.	3FG-3FGA	Pct.	FT-FTA	Pct.	Reb.-Avg.	A	TO	BLK	ST	Pts.-Avg.
2009-10	28-20	539-19.3	28-98	.286	3-15	.200	7-21	.333	76-2.7	38	41	3	40	66-2.4
2008-09	29-25	592-20.4	31-109	.284	5-25	.200	15-20	.750	57-2.0	38	33	4	28	82-2.8
Total	57-45	1131-20.4	59-207	.285	8-40	.200	22-41	.537	133-2.3	76	74	7	68	148-2.6

Career America East Statistics

Year	G-GS	Min-Avg.	FG-FGA	Pct.	3FG-3FGA	Pct.	FT-FTA	Pct.	Reb.-Avg.	A	TO	BLK	ST	Pts.-Avg.
2009-10	16-15	375-23.4	22-67	.328	2-11	.182	6-16	.375	58-3.6	30	32	2	29	52-3.3
2008-09	16-16	317-19.8	18-57	.316	1-8	.125	10-11	.909	33-2.1	23	23	2	16	47-2.9
Total	32-31	692-21.6	40-124	.323	3-19	.158	16-27	.593	91-2.8	53	55	4	45	99-3.1



Taylor Burner

5-10 • So. • C • Port Jefferson, N.Y.

#21

Port Jefferson
Arts & Sciences

2009-10 - Freshman

Scored a career-high nine points against Dartmouth... was 3-for-3 from the field and from the free throw line in that game... grabbed a career-high five rebounds against St. John's (11/15) and New Hampshire (1/6).

High School:

Two-year letterwinner at Port Jefferson High School for coach Mike Riley... an all-league selection... played for the Silver Bullets AAU team and coach Leah Martin... won the 15 & 16 national championship with the Silver Bullets.

Personal:

Taylor Jae Burner... born September 5, 1991 in Port Jefferson, N.Y.... daughter of Nancy and Michael Burner... has an older brother Brian and five older sisters, Robin, Gabi, Tara, Britt and Kyra... an arts & sciences major.

Question & Answer with Taylor Burner ...

Nicknames.....	Tay
Favorite spot on campus	Staller Steps
Favorite vacation spot	Caribbean
Favorite movie	Sleepless in Seattle
Nobody would believe I watch this TV show	Teen Mom
Favorite Musical Artist	Lauryn Hill
Most Impressive Person I've Met	My Mom
Best friend on another women's college basketball team	Tahira Johnson (USF)
Place I'd like to visit in the next five years	Paris
I Don't Leave For A Road Trip Without My	My Bear
The Record I Dream Of Breaking	points
Reality Show I Have The Best Chance Of Winning.....	So You Think You Can Dance
Most interesting class you've taken at Stony Brook	Soc. of Intimate Relationships
If I Was Head Coach For A Day, I Would	Not Make Anyone Run

Career Statistics

Year	G-GS	Min-Avg.	FG-FGA	Pct.	3FG-3FGA	Pct.	FT-FTA	Pct.	Reb.-Avg.	A	TO	BLK	ST	Pts.-Avg.
2009-10	22-0	138-6.3	7-23	.304	0-0	.000	8-12	.667	29-1.3	1	15	6	0	22-1.0
Total	22-0	138-6.3	7-23	.304	0-0	.000	8-12	.667	29-1.3	1	15	6	0	22-1.0

Career America East Statistics

Year	G-GS	Min-Avg.	FG-FGA	Pct.	3FG-3FGA	Pct.	FT-FTA	Pct.	Reb.-Avg.	A	TO	BLK	ST	Pts.-Avg.
2009-10	9-0	54-6.0	0-7	.000	0-0	.000	1-2	.500	13-1.4	1	4	1	0	1-0.1
Total	9-0	54-6.0	0-7	.000	0-0	.000	1-2	.500	13-1.4	1	4	1	0	1-0.1

2010-11 ROSTER INFORMATION



Amanda Corona

5-8 • So. • G • North Hollywood, Calif.

#3

Hart
Athletic Training

2009-10 - Freshman

Scored a career-high eight points against Dartmouth (12/11)... nailed a pair of threes in that game... grabbed five rebounds against St. John's (11/15)... played a season-high 25 minutes in her first game against Princeton (11/13).

High School

Played at Hart High School for coach Zach Koebel... named All-Area San Fernando Valley and first team all-league (2006-08)... named to the Los Angeles Daily News All-Area team (2007-08)... named All-CIF L.A. City section team and the Sunset League MVP (2008)... earned MVP honors at the So-Cal Classic 17 Bronze Division... averaged 17.2 ppg, 6.3 rpg, 3.8 apg and 2.8 spg in her junior year... named captain her senior season... also played for the Finest Basketball Club team and coach Ray Mayes.

Personal

Amanda Corona... born January 8, 1991 in Mission Hills, Calif.... daughter of Amanda and Amulfo Corona... has an older brother Allen... an athletic training major.

Question & Answer with Amanda Corona

Favorite TV Show Glee
 Favorite Vacation Spot San Diego
 Favorite midnight snack..... lime jello snacks
 Favorite Musician Common
 Most Prized Possession Nikon D3000
 Why did you choose your jersey number Threes all the way!!
 If a movie was made about you, which actress would play you Drew Barrymore
 Nobody would believe I watch this TV show Novela (spanish soap opera)
 Funnies person on the team..... Gerda Gatling
 WNBA player you would compare yourself to Taylor Lilley (Oregon)
 Record I dream of breaking.....most steals in a gamew
 Most influential People My Parents
 Most interesting class I've taken at Stony Brook..... Medical terminology
 One restaurant you wish could come to Stony Brook.....El Torito Mexican Grill
 Favorite spot on campus Starbucks

Career Statistics

Year	G-GS	Min-Avg.	FG-FGA	Pct.	3FG-3FGA	Pct.	FT-FTA	Pct.	Reb.-Avg.	A	TO	BLK	ST	Pts.-Avg.
2009-10	22-0	189-8.6	14-51	.275	4-30	.133	5-7	.714	23-1.0	6	15	0	5	37-1.7
Total	22-0	189-8.6	14-51	.275	4-30	.133	5-7	.714	23-1.0	6	15	0	5	37-1.7

Career America East Statistics

Year	G-GS	Min-Avg.	FG-FGA	Pct.	3FG-3FGA	Pct.	FT-FTA	Pct.	Reb.-Avg.	A	TO	BLK	ST	Pts.-Avg.
2009-10	8-0	44-5.5	6-12	.500	2-7	.286	3-3	1.000	4-0.5	2	3	0	2	17-2.1
Total	8-0	44-5.5	6-12	.500	2-7	.286	3-3	1.000	4-0.5	2	3	0	2	17-2.1

TABLE OF CONTENTS



Gerda Gatling

5-11 • So. • G • Woodbridge, Va.

#5

Forest Park
Business

2009-10 - Freshman

Scored a career-high seven points against New Hampshire... made her first career start against Dartmouth (12/11)... had six points, six rebounds and three assists against UMBC (2/27)... hit a pair of threes against the Retrievers... grabbed a career-high eight rebounds against Hartford (1/2).

High School:

Four-year letterwinner at Forest Park High School for coach Rebecca Tillett... selected to play in the McDonald's Roundball Classic as a senior... was named all-district, all-region and all-area as a senior... led her team to top-five rankings in the state all four years... captain her senior season... averaged 15.6 ppg and 10.2 rpg as a senior... played for the Fairfax Stars AAU team and coach Otto Jet... also ran track for four years.

Personal:

Gerda Datta Gatling... born July 27, 1991 in Brooklyn, N.Y.... daughter of Anna and Ron Gatling... has a younger brother David... majoring in business.

Question & Answer with Gerda Gatling ...

Favorite TV Show	Keeping Up With the Kardashians
Favorite spot on campus	Union
Favorite vacation spot	anywhere but Florida
Favorite movie	Salt
Favorite Musical Artist	Trey Songz
My favorite midnight snack	Cookies & Milk
Best friend on another women's college basketball team	Danni Jackson (GW)
Place I'd like to visit in the next five years	Brazil
Why did you choose your jersey number?	My high school friends helped me pick
The Record I Dream Of Breaking	steals
One restaurant I wish I could come to Stony Brook	Chick-Fil-A
Most interesting class you've taken at Stony Brook	Theater
WNBA Player you would compare yourself to	Diana Nolan

Career Statistics

Year	G-GS	Min-Avg.	FG-FGA	Pct.	3FG-3FGA	Pct.	FT-FTA	Pct.	Reb.-Avg.	A	TO	BLK	ST	Pts.-Avg.
2009-10	29-1	448-15.4	24-91	.264	3-8	.375	23-52	.442	80-2.8	15	37	2	20	74-2.6
Total	29-1	448-15.4	24-91	.264	3-8	.375	23-52	.442	80-2.8	15	37	2	20	74-2.6

Career America East Statistics

Year	G-GS	Min-Avg.	FG-FGA	Pct.	3FG-3FGA	Pct.	FT-FTA	Pct.	Reb.-Avg.	A	TO	BLK	ST	Pts.-Avg.
2009-10	15-0	277-18.5	16-56	.286	3-7	.429	12-21	.571	49-3.3	11	23	1	16	47-3.1
Total	15-0	277-18.5	16-56	.286	3-7	.429	12-21	.571	49-3.3	11	23	1	16	47-3.1

2010-11 ROSTER INFORMATION



Dani Klupenger

5-9 • So. • G • Aurora, Ore.

#11

Central Catholic
Journalism

2009-10 - Sophomore

Scored a career-high 12 points on 5-of-11 shooting against Boston University (1/13)... scored ten points against Maryland (12/27)... hit a pair of threes against the Terrapins... scored eight points and grabbed two rebounds against New Hampshire (1/6).

High School

Four-year letterwinner at Central Catholic High School for coach Sandy Dickerson... Gleukos All-Natural Sports Drink Player of the Year (2009)... two-time all-conference member (2008-09)... earned Coach's Award (2008), Most Inspirational (2009) and Free Throw Award (2008)... Aeries Player of the Month (2009)... Oregon City all-tournament team (2008)... two-time team captain... led team to a 26-1 record as a junior and 23-7 as a senior... averaged 13.7 ppg, 3.2 apg, 3.8 rpg and 1.8 spg as a senior... played for Team Concept AAU team and coach Michael Abraham... was class president and homecoming princess... named "Most Spirited" as a senior... an honor roll student... a fundraising coordinator for King Pin and also served as a Eucharistic minister.

Personal

Danielle Rae Klupenger... born March 3, 1991 in Portland, Oregon... daughter of Tami and Dan Klupenger... has a younger sister, Morgan... majoring in journalism.

Question & Answer with Dani Klupenger ...

Favorite non-sports hero My grandfather
 Favorite midnight snack..... cereal
 Favorite spot on campus gym
 Favorite Musician Rascal Flatts
 Favorite TV Show Say Yes to the Dress
 Most interesting class you've taken at Stony Brook Media industry
 If a movie was made about you, which actress would play you Amanda Bynes
 Person I look up to most..... Mom & Dad
 Place you would like to visit in the next five years..... Mexico
 First job..... Klupenger's Nursery
 WNBA Player you would compare yourself to..... Jackie Stiles
 Cell phone ring I'm a Barbie Girl
 One restaurant you wish could come to Stony Brook..... Red Robin
 Why did you choose your jersey number? When I was three I loved
 'the one and the one' from the University of Portland (AKA No. 11)

Career Statistics														
Year	G-GS	Min-Avg.	FG-FGA	Pct.	3FG-3FGA	Pct.	FT-FTA	Pct.	Reb.-Avg.	A	TO	BLK	ST	Pts.-Avg.
2009-10	20-0	189-9.5	23-78	.295	11-52	.212	5-9	.556	14-0.7	6	19	1	5	62-3.1
Total	20-0	189-9.5	23-78	.295	11-52	.212	5-9	.556	14-0.7	6	19	1	5	62-3.1
Career America East Statistics														
Year	G-GS	Min-Avg.	FG-FGA	Pct.	3FG-3FGA	Pct.	FT-FTA	Pct.	Reb.-Avg.	A	TO	BLK	ST	Pts.-Avg.
2009-10	8-0	78-9.8	11-34	.324	4-23	.174	1-2	.500	6-0.8	3	13	0	3	27-3.4
Total	8-0	78-9.8	11-34	.324	4-23	.174	1-2	.500	6-0.8	3	13	0	3	27-3.4

TABLE OF CONTENTS



Sam Landers

5-7 • So. • G • Springfield, Va.

#22

West Springfield
Arts & Sciences

2009-10 - Freshman

Scored a career-high 14 points against Hofstra (12/21)... was 5-of-6 with a pair of threes against the Pride... scored 12 points in the next game against Maryland... had a four-game streak where she connected on 15-of-22 field goal attempts (12/11-12/28)... started 14 of the 30 games she played in.

High School:

Four-year letterwinner at West Springfield High School for coach Bill Gibson... named first team All-Patriot District and all-region (2009)... three-time Patriot District All-Tournament team selection (2007-09)... named captain her junior and senior season... played for the Lessons Learned Hoops AAU team and coaches Cheryl Yarbrough and Mandy Ronay... member of the National Honor Society and Quill & Scroll Honor Society... editor of the school newspaper.

Personal:

Samantha Landers... born August 12, 1991 in Fairfax, Virginia... daughter of Janine and Bob Landers... father played football at Ohio Northern University... an arts & sciences major.

Question & Answer with Sam Landers ...

Favorite TV Show Say Yes to the Dress
 Favorite spot on campus Staller Steps
 My most prized possession i-pod
 Why did you choose your jersey number? Always had the same number
 Favorite Musical Artist Lady Antebellum & Katy Perry
 My favorite midnight snack red velvet cake
 Place I'd like to visit in the next five years Italy or Greece
 WNBA player you could compare yourself to Sue Bird
 The Record I Dream Of Breaking scoring & assists
 If I were head coach for a day, I would do shooting drills the whole practice
 My favorite non-sports hero My parents

Career Statistics

Year	G-GS	Min-Avg.	FG-FGA	Pct.	3FG-3FGA	Pct.	FT-FTA	Pct.	Reb.-Avg.	A	TO	BLK	ST	Pts.-Avg.
2009-10	30-14	537-17.9	42-118	.356	13-45	.289	25-36	.694	36-1.2	23	66	0	18	122-4.1
Total	30-14	537-17.9	42-118	.356	13-45	.289	25-36	.694	36-1.2	23	66	0	18	122-4.1

Career America East Statistics

Year	G-GS	Min-Avg.	FG-FGA	Pct.	3FG-3FGA	Pct.	FT-FTA	Pct.	Reb.-Avg.	A	TO	BLK	ST	Pts.-Avg.
2009-10	16-7	245-15.3	17-66	.258	8-30	.267	9-13	.692	13-0.8	8	27	0	9	51-3.2
Total	16-7	245-15.3	17-66	.258	8-30	.267	9-13	.692	13-0.8	8	27	0	9	51-3.2



Talisha Bridges

5-10 • So. • G/F • Kalamazoo, Mich.

#24

Loy Norrix
Arts & Sciences

2009-10 - Freshman (New Orleans)

Appeared in 28 games for the Pioneers ... averaged 5.2 points and 3.1 rebounds in 12.5 minutes per game ... poured in a career high 19 against Nicholls State.

High School

Played four years at Loy Norrix High School ... named the Kalamazoo Gazette 2008-09 Class A-B Player of the Year ... averaged 20.1 points and 10.4 rebounds per game ... a two-year captain ... led team to a combined 43-6 record in her junior & senior seasons ... two-time all-district & all-league selection ... also lettered in volleyball, softball & track ... was a two-time captain in volleyball.

Personal

Talisha Lachelle Bridges ... daughter of James Jackson and Lee Bridges ... born July 8, 1991.

Question & Answer with Talisha Bridges ...

Favorite non-sports hero Tyra Banks
 Favorite TV show Golden Girls
 Favorite spot on campus My room
 What is your most prized possession? Grandmothers jacket
 Favorite Movie Sister Act 2
 Most interesting class you've taken at Stony Brook CPR
 If a movie was made about you, which actress would play you Taraji P. Henson
 Person I look up to most Mother
 Place you would like to visit in the next five years Paris
 First job paint crew
 Best friend on another women's college basketball team Janell Smith (Michigan)
 Funniest person on the team Whitney Davis
 Most impressive person I've met? Damien Smith (HS coach)

Career Statistics (New Orleans)

Year	G-GS	Min-Avg.	FG-FGA	Pct.	3FG-3FGA	Pct.	FT-FTA	Pct.	Reb.-Avg.	A	TO	BLK	ST	Pts.-Avg.
2009-10	28-4	351-12.5	56-115	.487	0-1	.000	33-58	.569	88-3.1	15	54	10	16	145-5.2
Total	28-4	351-12.5	56-115	.487	0-1	.000	33-58	.569	88-3.1	15	54	10	16	145-5.2



Juanita Cochran

6-2 • So. • C • Saginaw, Mich.

#44

Saginaw
Arts & Sciences

2009-10 - Freshman (New Orleans)

Played in 29 games ... started the last 19 ... averaged 5.3 points while pulling down 6.0 rebounds per game ... second on the team with 32 blocks. .

High School:

Played four years at Saginaw Arthur Hill High School ... a three-time captain ... was a three-time selection to the All-Saginaw Valley and Saginaw New All-Area teams ... led team to 19-1 record as a senior ... also lettered in track and volleyball ... named to honor roll.

Personal:

Juanita Cochran ... daughter of Phillip Lucas and Jonette Cochran ... born Aug. 21, 1991.

Question & Answer with Juanita Cochran ...

Favorite TV ShowFamily Matters
 Favorite spot on campus My room
 My most prized possessionblanket grandma gave me
 Favorite Musical Artist Beyonce
 My favorite midnight snack ritz cheese sandwiches
 Place I'd like to visit in the next five yearsHungary
 WNBA player you could compare yourself to Sylvia Fowles
 The Record I Dream Of Breaking rebounds
 Best friend on another women's college basketball team Amanda McCarthy
 (Jacksonville State)
 My favorite non-sports hero My mom
 If a movie were made about you, which actress would play?Queen Latifah
 Funnies person on the team Gerda Gatling

Career Statistics (New Orleans)

Year	G-GS	Min-Avg.	FG-FGA	Pct.	3FG-3FGA	Pct.	FT-FTA	Pct.	Reb.-Avg.	A	TO	BLK	ST	Pts.-Avg.
2009-10	29-19	580-20.0	61-150	.407	0-0	.000	32-54	.593	173-6.0	15	68	32	12	154-5.3
Total	29-19	580-20.0	61-150	.407	0-0	.000	32-54	.593	173-6.0	15	68	32	12	154-5.3



Whitney Davis

5-10 • Junior • G/F • Muskegon, Mich.

#23

Muskegon
Sociology

2008-10 (Muskegon Community College)

Played two seasons at Muskegon Community College for head coach Ronald Jenkins ... a 2010 NJCAA All-America second team selection ... led the Western Conference in scoring with a 17.7 points per game average ... pulled down 12.8 rebounds which ranked ninth nationally ... named to the 2010 Western Conference All-Region first team ... a 2009 all-conference selection.

High School

Played for head coach Marie Williams at Muskegon High School ... a three-time all-conference selection ... also lettered in track for two years ... a member of the National Honor Society.

Personal

Whitney LaBelle Davis ... daughter of Thernell Davis and Yvette Lynn Davis ... born May 21, 1990 ... mother played two years of basketball at Muskegon Community College ... majoring in sociology.

Question & Answer with Whitney Davis

Favorite TV Show A Different World
 Favorite spot on campus locker room
 My Favorite non-sports hero My mom
 Favorite Vacation Spot Tampa, Fla.
 Most Prized Possession Old letters from friends
 Funniest person on the team Sam Landers
 Favorite non-sports hero My Dad
 Favorite midnight snack Cheesecake
 WNBA player you would compare yourself to Swin Cash
 One place you would like to visit in the next five years Italy
 Most impressive person I've ever met My grandfather
 If I were head coach for a day, I would defensive drills all practice



Morghan Farnsworth

6-1 • Fr. • F • Cornish, N.H.

#14

Windsor (Vt.)
Psychology

High School

Played four seasons for head coach Bruce Mackay at Windsor High School (Vt.) ... named captain as a senior ... led Windsor to two Vermont Division III state titles ... 2010 McDonald's All-American nominee ... a three-time Marble Valley All-League first team member ... named to the Vermont Dream Dozen in 2008 & 2009 ... a 2010 Burlington Free Press first team all-state selection ... was a honorable mention selection to the Burlington Free Press All-State team in 2009.

Personal

Morghan Farnsworth ... born Sept. 9, 1991 ... daughter of Ross and Cora Farnsworth ... majoring in psychology.

Question & Answer with Morghan Farnsworth

Favorite Movie Breakfast Club
 Favorite spot on campus locker room
 Favorite Musician Keith Urban
 Favorite Vacation Spot Myrtle Beach
 Favorite non-sports hero Mom
 If a movie was made about you, which actress would play you? Kathrine Heigl
 Most prized possession Cell phone
 Favorite midnight snack Chocolate
 Why did you choose your jersey number? My mom's favorite number
 Funniest person on the team Sam Landers
 First job working with autistic children
 Most interesting class you've taken at Stony Brook Race in America