

Belle Terre

Belle Terre

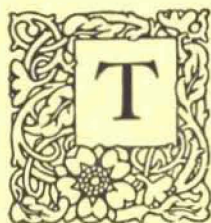
HOME *of The* BELLE TERRE CLUB

PORT JEFFERSON, LONG ISLAND



Entrance Lodge to Belle Terre

Belle Terre is designed for congenial people of good taste, and sufficient means, to improve their individual holdings in harmony with the public features of the property.



THE two leading motives of the Belle Terre Estates Incorporated, have been: First, to absolutely guard the Estates on all sides from every detrimental influence. Nature has largely aided in this by giving the Estates five miles of shore front on three sides, ownership of which, to low water mark, forever safeguards the beaches.

The land side is protected by a high artificial barrier, with a single guarded entrance. From all that may be seen from this entrance one gets the impression of a vast baronial estate rather than of the half a hundred homes of a congenial country colony.

The second motive has been to make Belle Terre sufficient unto itself by providing not only a central water and lighting plant, but every convenience and all forms of recreation as well. Golf links, tennis courts, yacht landing, forty miles of beautiful drives and bridle paths, a superbly appointed Club House, garage, livery, and every other possible adjunct of delightful country living, all lie within its borders.

Those to whom these two motives appeal will be interested in this booklet.

Location Belle Terre is situated at Port Jefferson Harbor on the north shore of Long Island, at a distance just sufficient to remove it from the intrusions of the excursion element.

From the station the drive of a short mile at a height of two hundred feet above the water affords a magnificent panorama every step of the way to the picturesque chateau which marks the entrance.

Natural Beauties The surface of Belle Terre is widely diversified, the elevation ranging from ninety to two hundred feet. The picturesque scenery of hill and dale, of woodland and meadow, combine in a landscape of unexcelled beauty. The month of June is

made delightful by the luxuriant display of the mountain laurel and dogwood in bloom at this season. Such interesting points as The Anchorage, Nature's Garden, Giant's Cradle, The Cliffs, The Moors, Glen Rock, Piney Bluff, The Lost Meadow, The Old Homestead, and Sentinel Rock, give variety and delight to every one of the forty miles of drives which traverse this magnificent property.

Shore Front The entire beach front of the property is composed of clean sand or pure white pebbles. Belle Terre Estates Incorporated, having title to low water mark, are enabled to guarantee to purchasers the undisturbed possession of these beautiful beaches. While the unusual amount of shore front of Belle Terre gives to very many of the estates individual ownership of a portion of the water front, nevertheless, reservations have been made on both Sound and Harbor for owners of the interior estates.

Yachting Port Jefferson Harbor, from twelve to seventy feet deep, enables the yachtsman to anchor his yacht in front of his house or sail a canoe in safety on its land-locked waters. An ever-changing picture of marine beauty is afforded by the fleet of white winged yachts, sailing through the harbor to or from the open sea.

Golf The Golf Course of the Belle Terre Club consists of 9 holes with a playing distance of 3200 yards—has a fine, soft turf, with many natural and artificial hazards. Mr. Alex H. Findlay pronounces it one of the most perfect courses he has ever laid out. The course is in charge of a competent instructor, from whom can be obtained the usual golfers' supplies.



Pergolas, 130 feet above Long Island Sound

Belle Terre is a 1300 acre peninsula, ranging from 100 to 200 feet above water level.



Shore Front

Belle Terre has five miles of shore front with beaches of clean sand and white pebbles.



Terminus of Cliff Drive—Belle Terre

- Bathing** The cleanest of beaches affords both surf and still water bathing. Commodious Bath-houses, equipped with fresh water showers.
- Tennis and Croquet** There are well laid out courts for tennis enthusiasts and a croquet ground for those who enjoy a less exciting game.
- Livery** A well-equipped livery furnishes choice saddle and carriage horses, with vehicles of all kinds. One of the chief forms of recreation on the Belle Terre Estates is horse-back riding. This is continually invited by the miles of shady bridle paths within the borders of the Estates.
- Healthfulness** Its elevation and peninsular location give to Belle Terre the cooling breezes from Sound and Bay, while the altitude and the sandy soil, make the location a most healthful one.
- Motoring** The building of the new Long Island Motor Parkway will give an opportunity for delightful motoring under conditions unequalled anywhere else in the world. It will materially shorten the time between Belle Terre and the City. Long Island is famed for the opportunities it offers for motor car trips. These can all be made with Belle Terre as a starting point. The main features of the Estates, such as the Club House, the Pergolas, and Golf Links, may be visited by automobile, while the woodland drives are reserved for carriages and equestrians. A commodious garage is a feature that will appeal to the owners of motor cars. Light repairs and gasoline may be obtained on the premises.



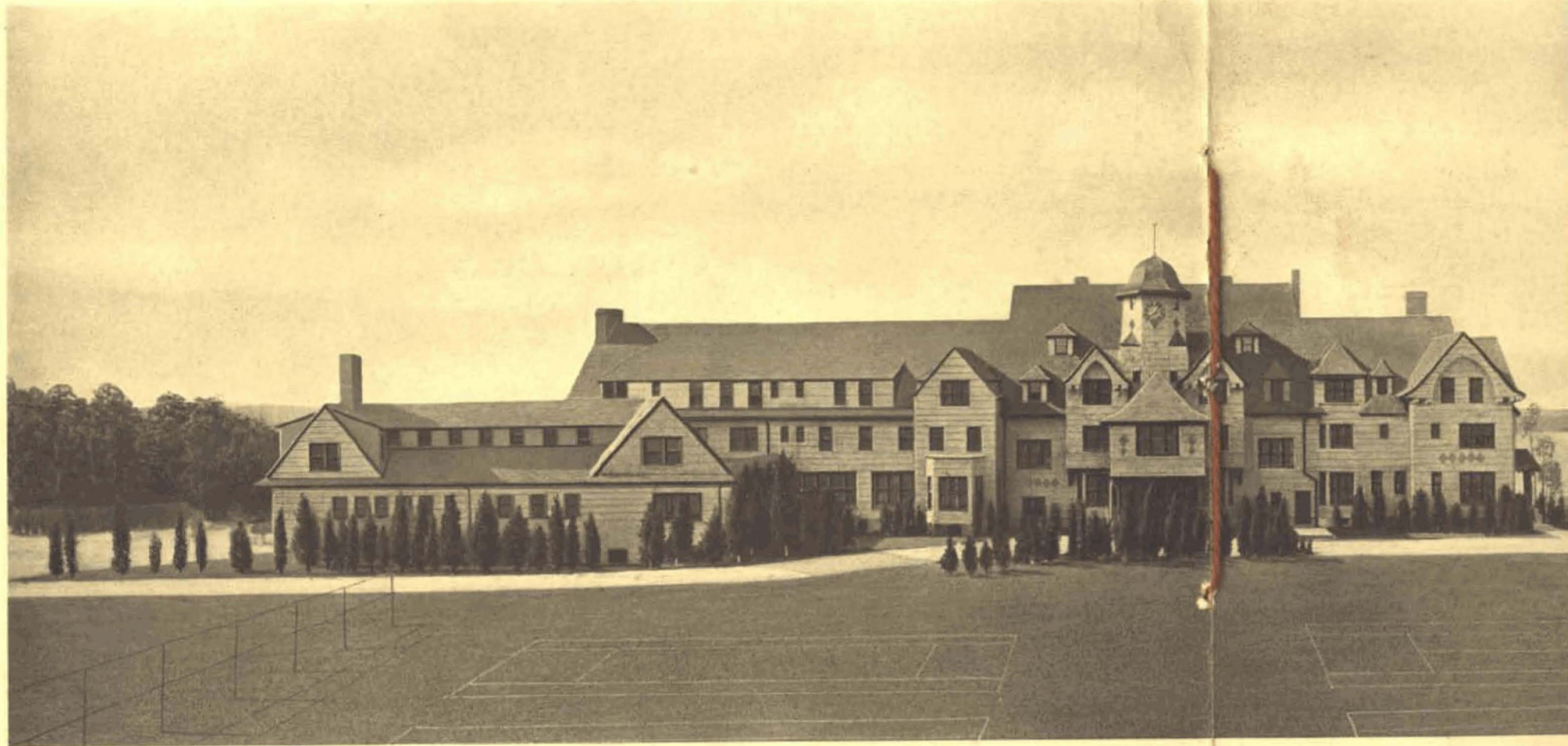
40 Miles of Woodland Drives



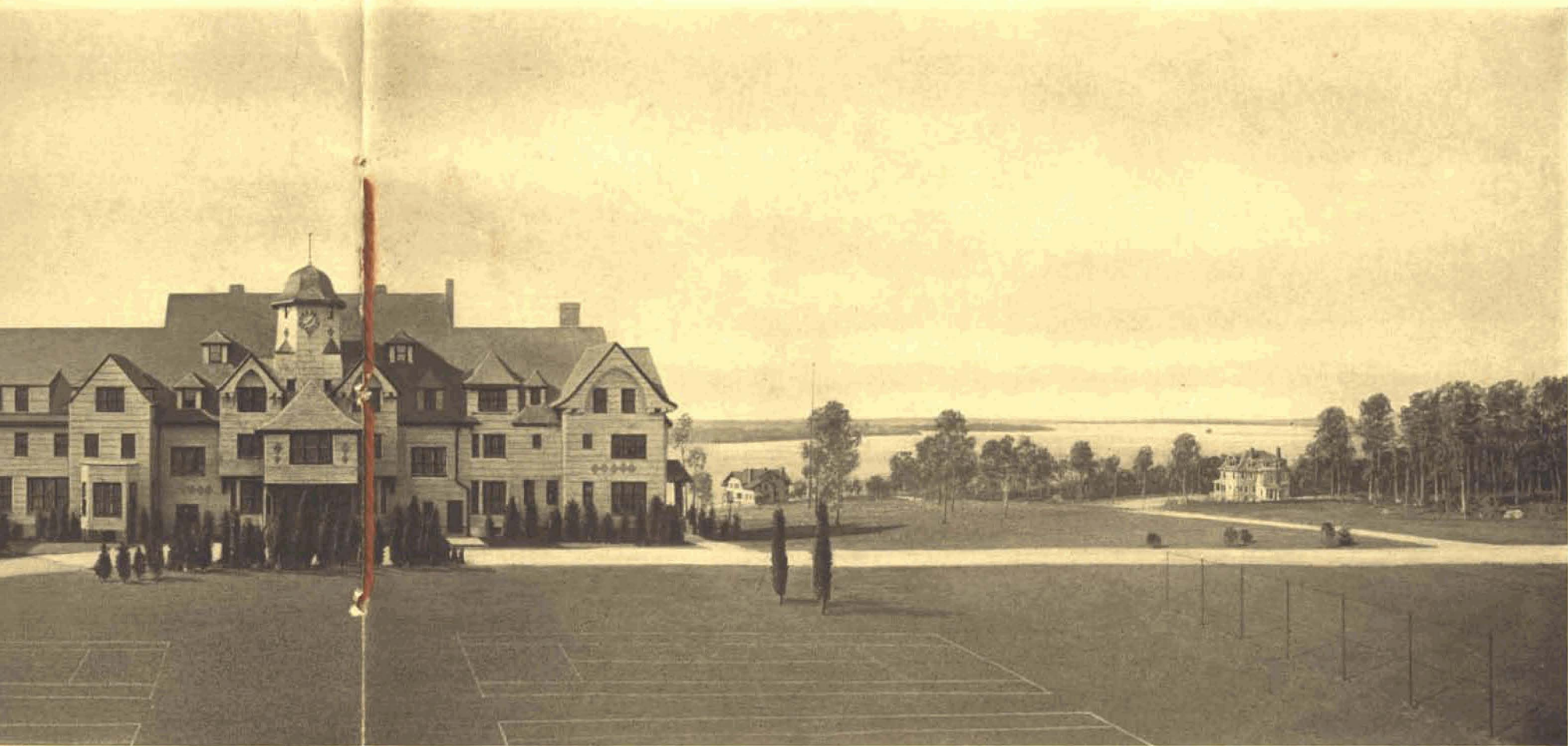
Golf Course



Port Jefferson Harbor



BELLE TERRE CLUB HOUSE
Showing a portion of the grounds and harbor view



BELLE TERRE CLUB HOUSE
Showing a portion of the grounds and harbor view



he Belle Terre Club while designed primarily for residents of Belle Terre, also welcomes to its hospitality, as guests, those who desire for a longer or shorter period to make an experimental stay at the Estates with a view to permanent affiliation with the colony.

Every detail of the Club House, from the quaint entrance with "coaching scene" wrought in the door, to the great fire-places in the hall, suggests the charm of an old English inn.

An atmosphere of simplicity and quiet elegance pervades the place.

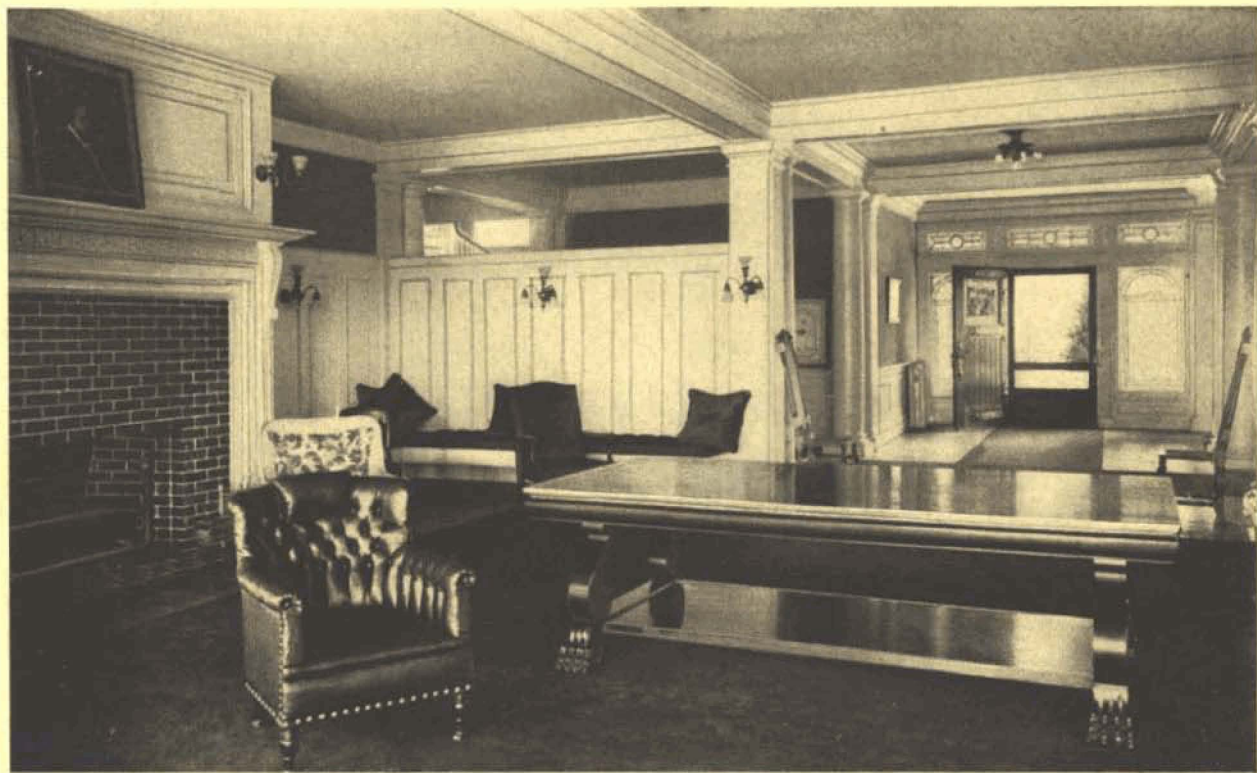
For those who are seeking rest amid surroundings of great natural beauty, in a location of unequalled healthfulness, with such diversions as described elsewhere, with the added assurance of unquestionable social surroundings—Belle Terre and its Club House have been designed.

In order to maintain the standard set for itself, the management reserves the privilege of declining applicants who in its judgment would find themselves out of harmony with the avowed spirit of the Club colony.

The Club House provides resident accommodations for about one hundred members, with several auxiliary detached cottages.

The large dining room, with its broad veranda overlooking the water, will easily accommodate two hundred.

All the appointments of the house are of the best. The great living room, with its two massive fire-places, its easy chairs and cheery atmosphere, is most attractive. The sleeping rooms are large, airy and well lighted. They are arranged singly or en suite. All have private baths or stationary lavatories, and most of them open fire-places. Local and long-



Living Room—Belle Terre Club



Main Hall—Belle Terre Club



Veranda — Belle Terre Club



Lawn of "Nevalde"

Portion of an improved estate at Belle Terre.

distance telephone connection in each room, electric lights and all other appointments are in keeping with the best known.

The cuisine of the Club is exceptional. The quality, service and dining room appointments are brought to a point of unusual perfection. The Club farm and garden produce the finest of fruits and vegetables.

**Private
Estates**

This idea of community of interest in all public features in no way interferes with the perfect freedom and quiet of each individual owner upon his private estate.

The varied topography, aided by the forest growth of Belle Terre, gives to the owner of even a five-acre plot, in a marked degree, that quiet exclusiveness which one so desires at times in his country home.



Residence — "Nevalde"



Bungalow — Belle Terre



Cottage — Belle Terre



Club House—View from Harbor



Transit There are ten trains each day to and from New York, giving an express service in an hour and twenty minutes, with special "Belle Terre" car attached to the most luxurious train. All trains are met by the Belle Terre Auto-Bus, which quickly covers the short mile between the Port Jefferson Station and Belle Terre.

Yacht The enthusiastic yachtsman in his fast motor boat can easily make daily trips to and from business in New York.

Motor Car By motor car leave Jericho Turnpike at Jericho to the right on middle country road, through Woodbury, Comac, Smithtown, St. James, Stony Brook and Setauket to Port Jefferson.



Club Auto-bus

BELLE TERRE ESTATES INCORPORATED

OFFICERS Dean Alvord, *President*
Charles E. Bayliss, *Vice-President*
Fred'k A. Phelps, *Treasurer*
F. C. Hicks, *Secretary*

For other information, including club reservations, address

BELLE TERRE ESTATES INCORPORATED

277 Broadway, New York City
Phones 3384 and 3385 Worth

Port Jefferson, Long Island
Phone 42 Port Jefferson